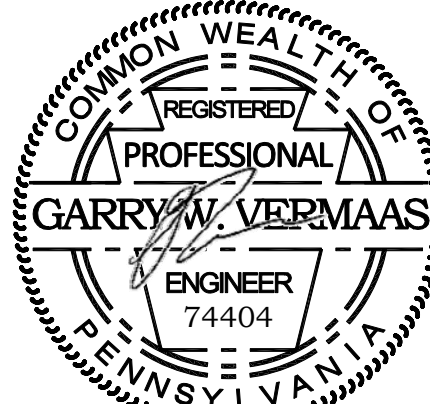




BASE4

BASE4
3858 GLADES ROAD, #31
BOCA RATON, FLORIDA 33434
1.720.725.4544 www.base-4.com

SEAL



GARRY VERMAAS, PhD, PE
30116 US
9011 EDGEWATER BLVD
PARKLAND, FLORIDA, 33076



ISSUE:

Issued for Permit
08.05.2016

PROJECT: 16-018

Hampton Inn & Suites

New Stanton, PA 15672

OWNER:

Stanton Hospitality LLC

52 Blueberry Lane,
Grove City, PA 16127

No.	Issue Date	Project Status

DATE 2016.08.05

DRAWN BY JP

CHECKED BY GVV

SCALE AS NOTED

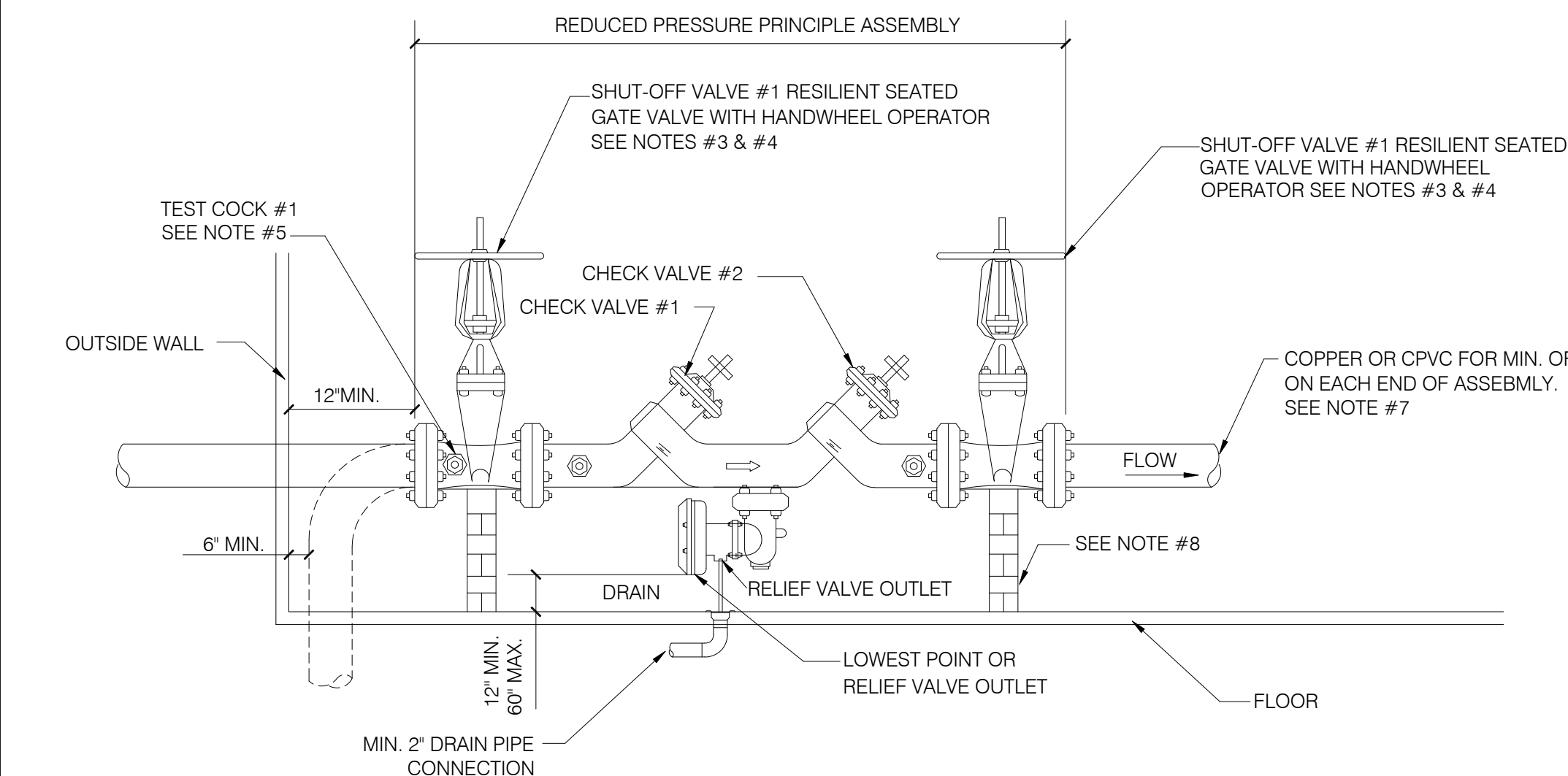
PROJECT NO. B4-67-1603

SHEET NAME

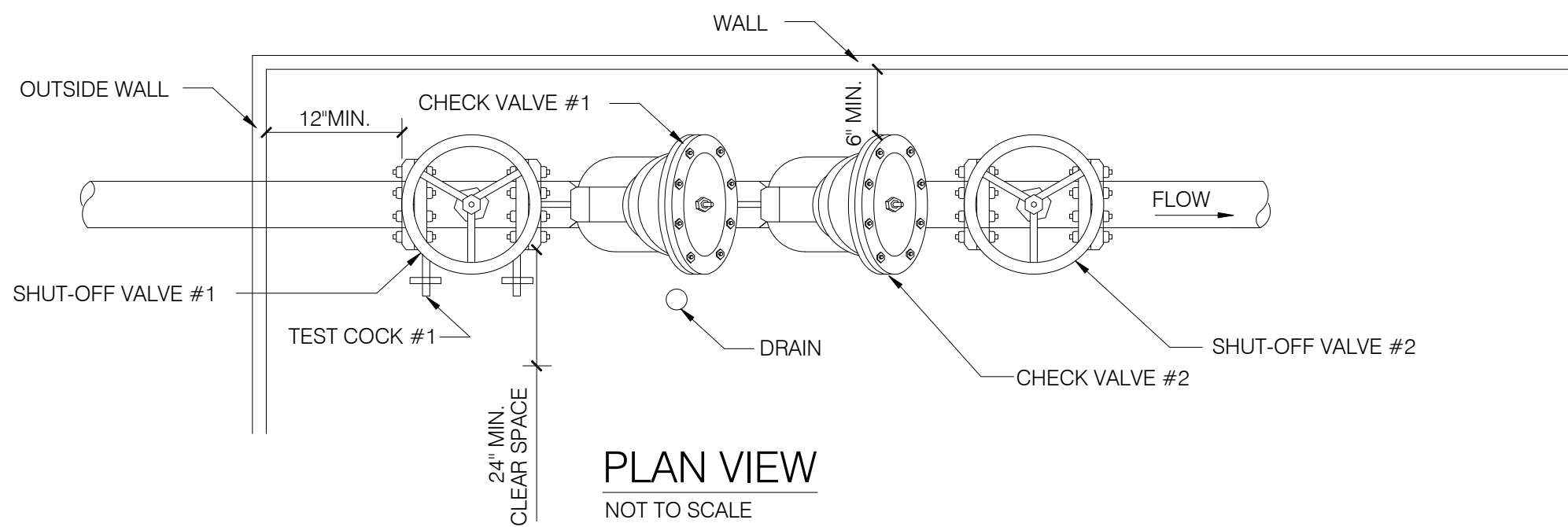
DETAILS (1)

SHEET NO.

P101



ELEVATION VIEW
NOT TO SCALE

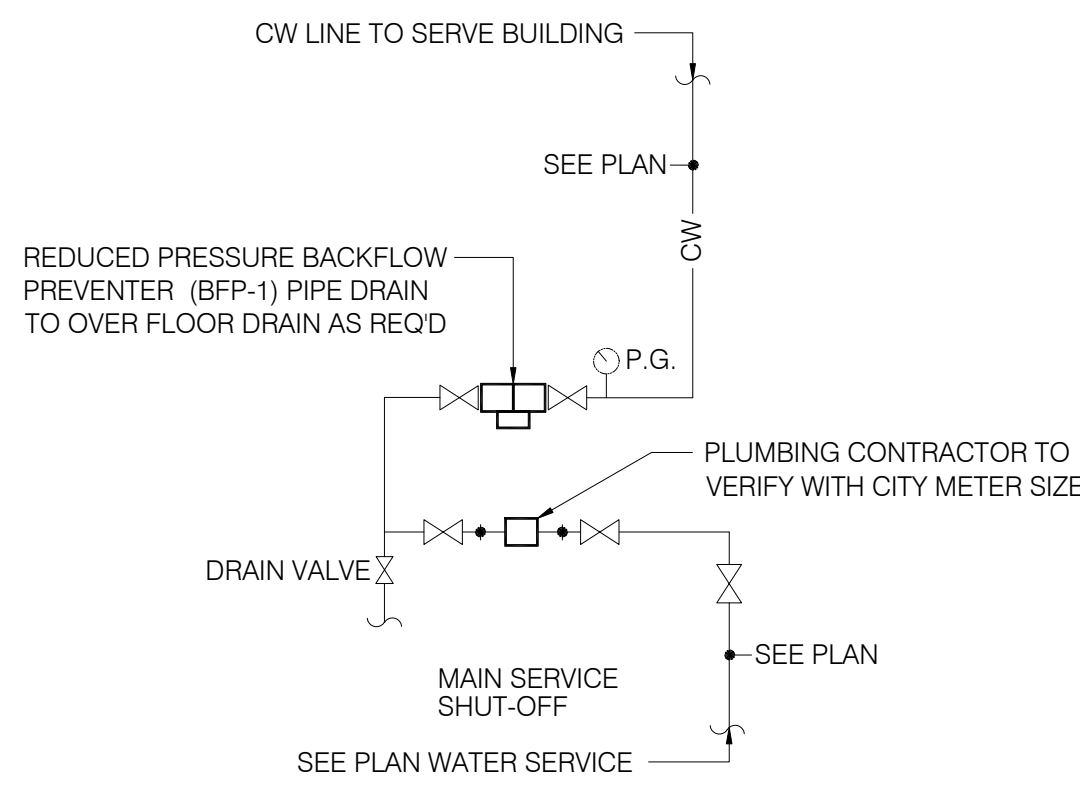


PLAN VIEW
NOT TO SCALE

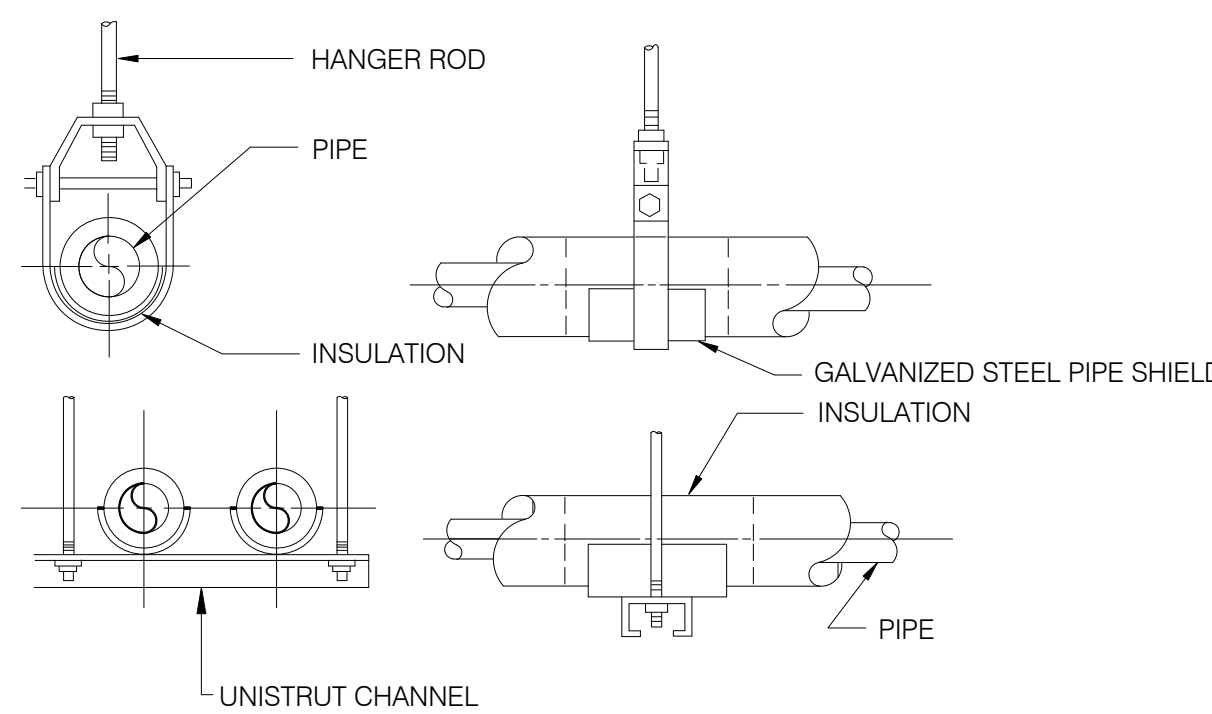
NOTES:

- INDOOR INSTALLATION SHALL ONLY BE PERMITTED IN CASES WHERE ADEQUATE SPACE FOR THE BACKFLOW PREVENTION ASSEMBLY IS NOT AVAILABLE OUTSIDE. OWNER WILL REVIEW ON A CASE BY CASE BASIS.
- REDUCED PRESSURE ASSEMBLIES (RPA).
- APPROVED RPA INCLUDES SHUT-OFF VALVES.
- TEST COCK #1 SHALL BE UPSTREAM OF SHUT-OFF VALVE #1 AND IS PART OF THE APPROVED ASSEMBLY.
- ASSEMBLIES SHALL BE INSTALLED UPRIGHT AND IN THE HORIZONTAL POSITION UNLESS OTHERWISE APPROVED.
- PIPE MATERIAL AND FITTINGS SHALL BE AS SPECIFIED STANDARDS & SPECIFICATIONS.
- SUPPORT FOR ASSEMBLY SHALL BE DESIGNED BY GENERAL CONTRACTOR. IT IS RECOMMENDED 8'-10' RP BE SUPPORTED AT CENTER. THE SUPPORT SHALL NOT BLOCK RELIEF VALVE OR DRAIN PORT.
- AN AIR GAP DRAIN IS RECOMMENDED TO REDUCE SPLASHING OF MINOR DISCHARGES FROM THE RELIEF VALVE DRAIN PORT.
- ALL LOCATIONS FOR RPA'S REQUIRE OWNER APPROVAL.
- NO TAPS, BRANCHES, FHS OR OTHER ACCESSORIES ARE PERMITTED ON THE PIPING BETWEEN THE BPA & METER.

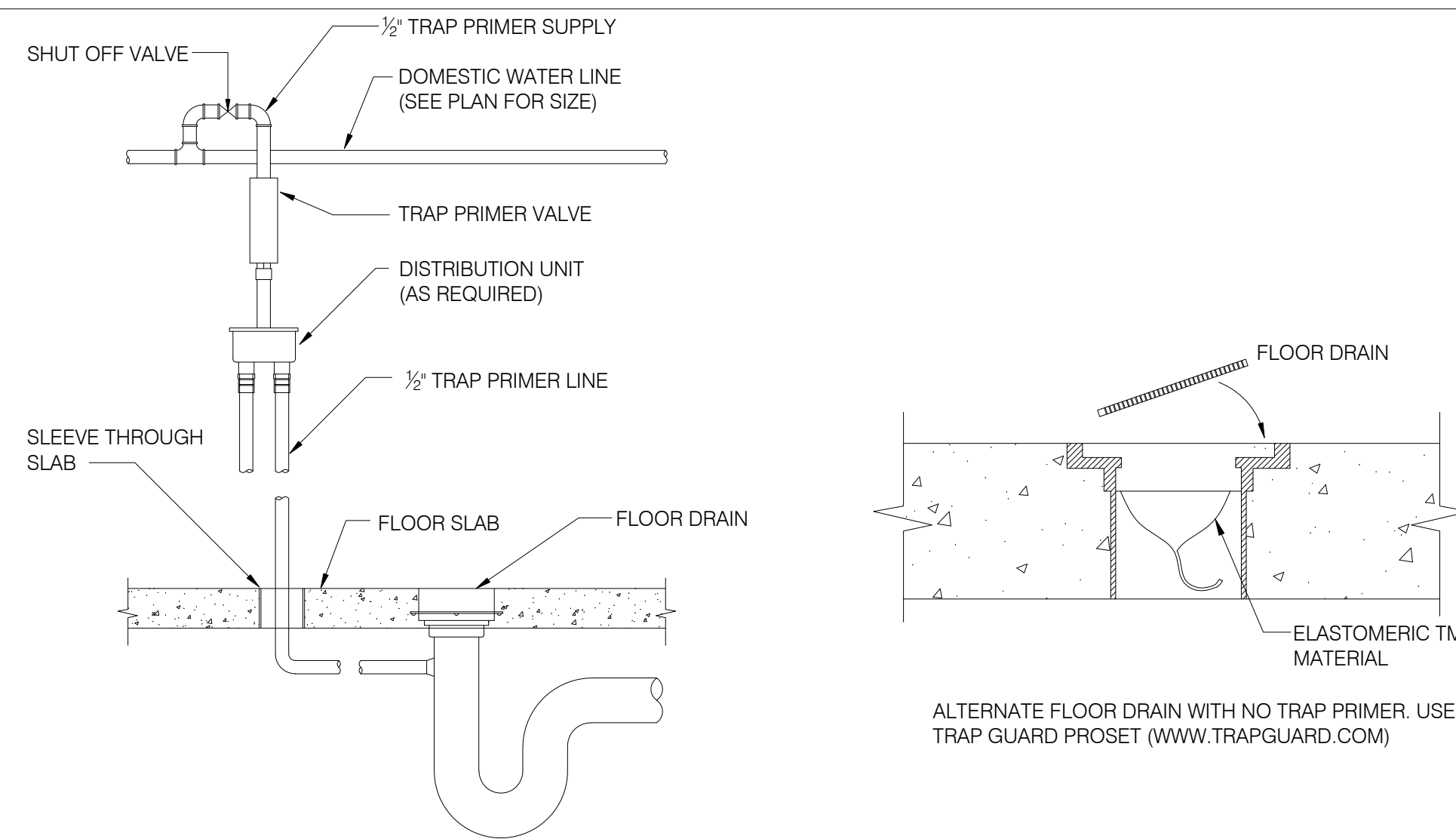
1 RPZ BACK FLOW PREVENTER DETAIL
NOT TO SCALE



2 INCOMING WATER SERVICE PIPING DIAGRAM
NOT TO SCALE



4 WATER PIPING HANGER DETAIL
NOT TO SCALE



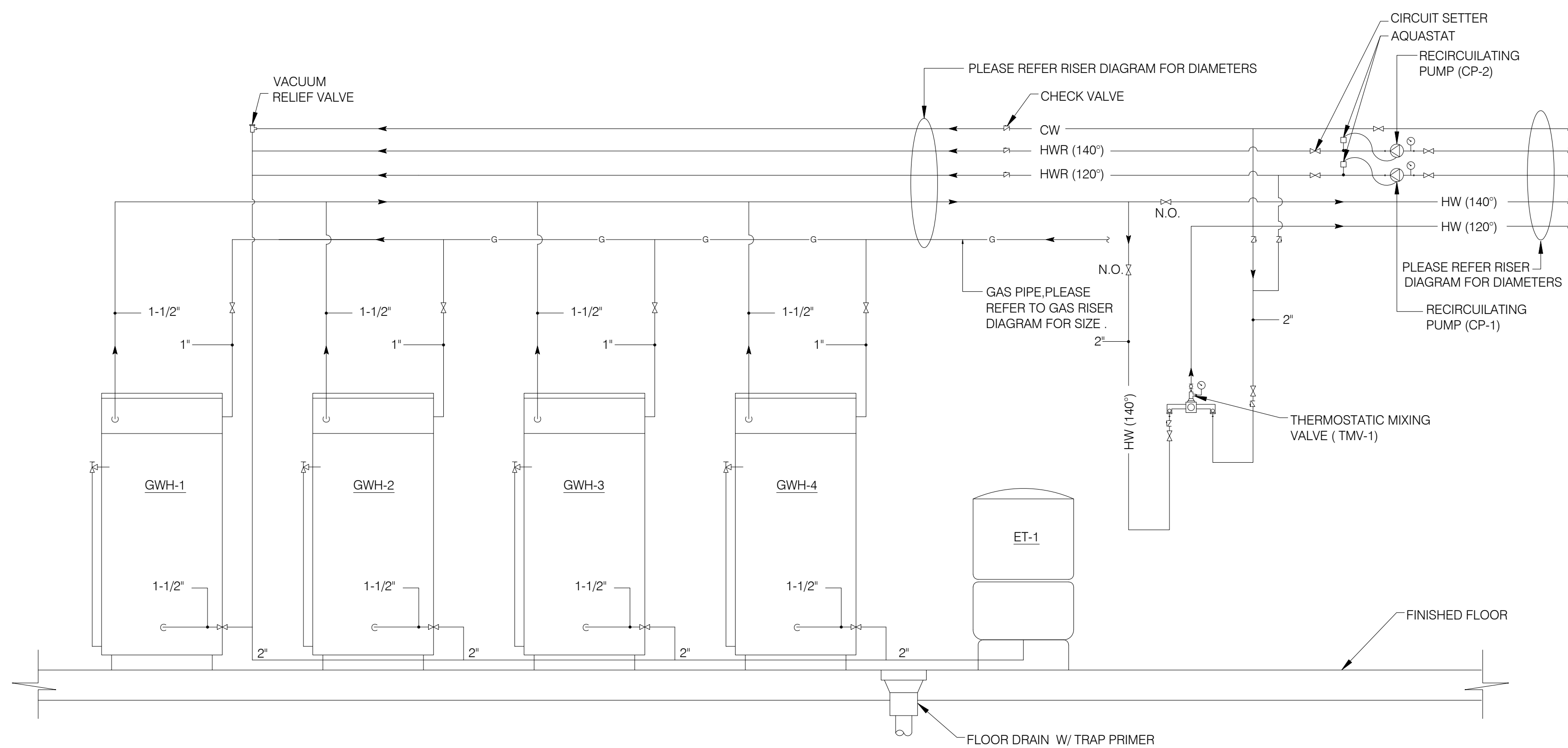
3 TRAP PRIMER & TRAP GUARD DRAIN INSERT DETAIL
NOT TO SCALE

PIPE DIA. 'D'	MAXIMUM 'A'	MAX. TRENCH WIDTH AT TOP OF PIPE
1" TO 5"	6"	A
6" TO 15"	8"	A
18" TO 21"	10"	A
24" TO 30"	12"	A
33" TO 42"	15"	A
48" & LARGER	18"	A

APPROVED BACKFILL COMPACTED
IN MAXIMUM 6" THICK LAYERS
EXCEPT AS OTHERWISE SPECIFIED

BOTTOM QUADRANT OF PIPE
SHALL BE BEDDED FOR FULL
LENGTH OF BARREL
(EXCEPT PRESSURE PIPE)

5 PIPE TRENCH DETAIL
NOT TO SCALE



NOTE:

- REFER TO MECHANICAL DWGS FOR ROUTING OF GAS FIRED WATER HEATERS INTAKE & EXHAUST FLUES.
- VALVE BOTH SYSTEMS TOGETHER SUCH THAT EACH SYSTEM CAN BACK UP THE OTHER IN EMERGENCIES.
- USE AO SMITH CYCLONE, BRADFORD WHITE HIGH EFFICIENCY, TANKLESS WATER OR EQUIVALENT HEATERS WITH MANIFOLD SYSTEM AS PER MANUFACTURERS REQUIREMENTS.
- CONTRACTOR SHOULD PROVIDE DRAIN PAN FOR ALL WATER HEATERS.

6 WATER HEATERS INSTALLATION DETAIL
NOT TO SCALE